

# MWD Website – Water Conservation Dashboard

Water Shortage Emergency, **SWP-Dependent Areas**\_\_

## Tracking Metropolitan Water Use

Since June 1, Metropolitan member agencies that are dependent on State Water Project supplies have implemented mandatory local conservation measures to stretch these limited state supplies and help sustain these agencies for the rest of 2022. In addition to local supplies, these agencies have used 54,737 acre-feet of available state project water, which is 2,516 acre-feet less than the Metropolitan Emergency Water Conservation Program target for this period. An acre-foot is nearly 326,000 gallons, enough to meet the annual demands of three Southern California households.

**CUMULATIVE  
WATER USE**

**As of July 19**

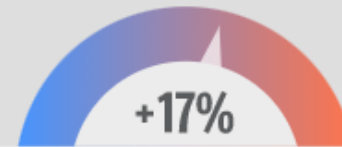
**ON TARGET**



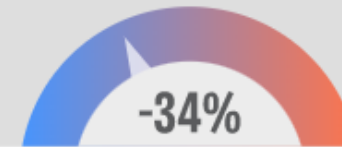
**WATER USE BY AGENCY**

**Month of June**

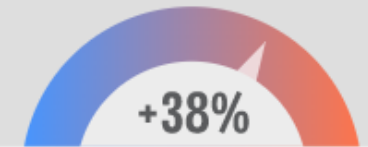
**Calleguas Municipal  
Water District**



**Inland Empire  
Utilities Agency**



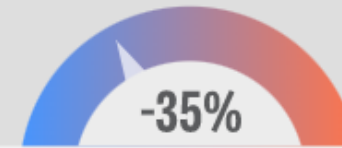
**Las Virgenes Municipal  
Water District**



**Los Angeles Department  
of Water and Power**



**Three Valleys Municipal  
Water District**



**Upper San Gabriel Valley  
Municipal Water District**

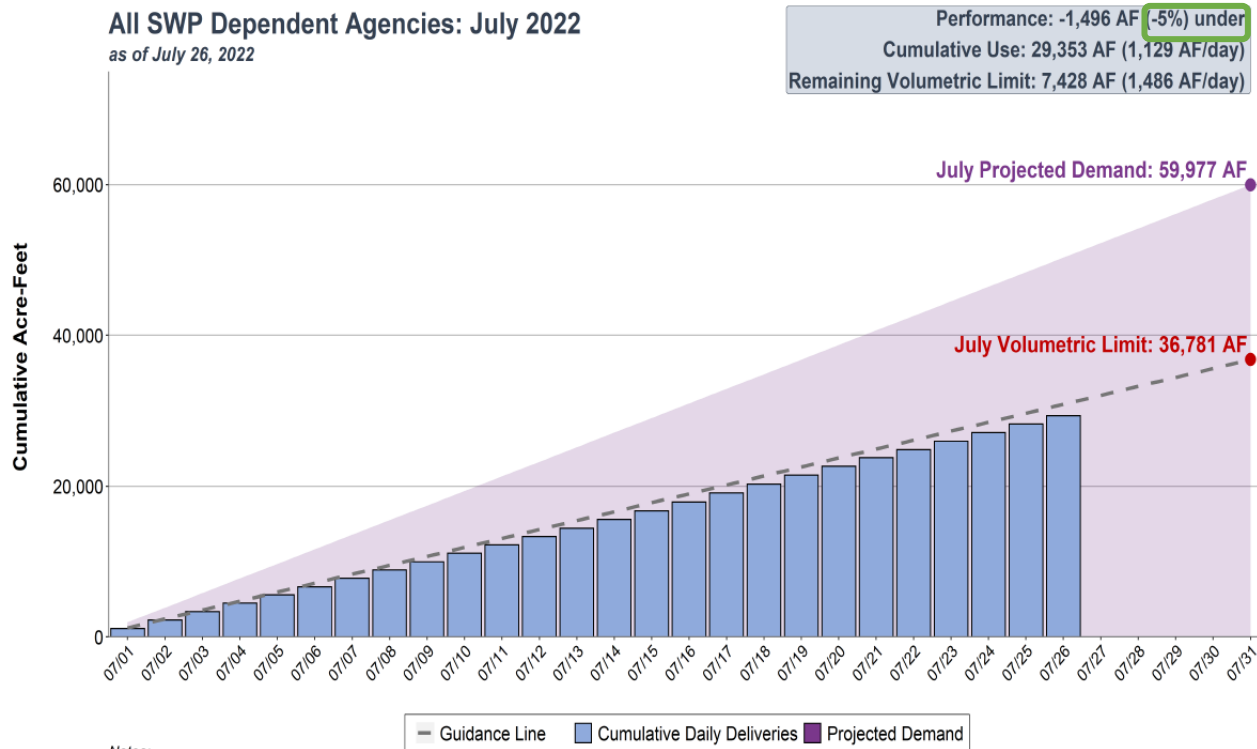


Click on the name of the impacted member agency to learn more about local mandatory conservation approaches.

# Emergency Water Conservation Tracking

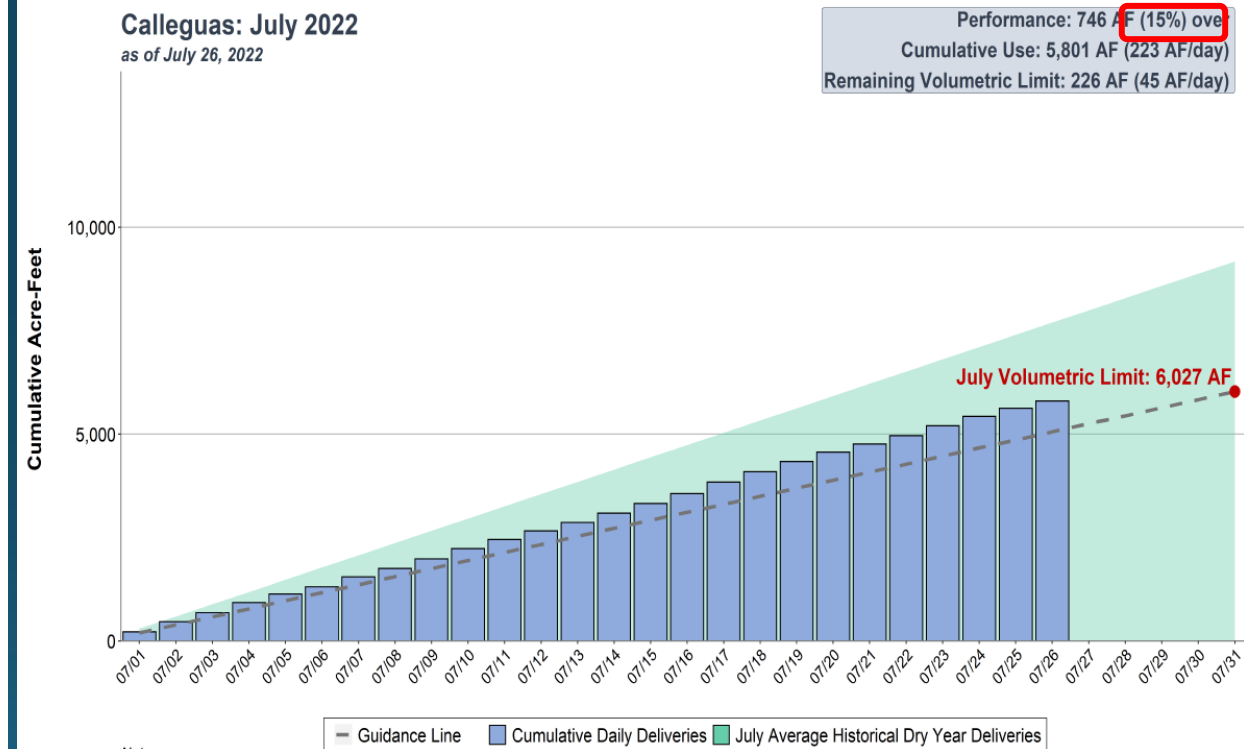
## All SWP Dependent Agencies: July 2022

as of July 26, 2022



## Calleguas: July 2022

as of July 26, 2022

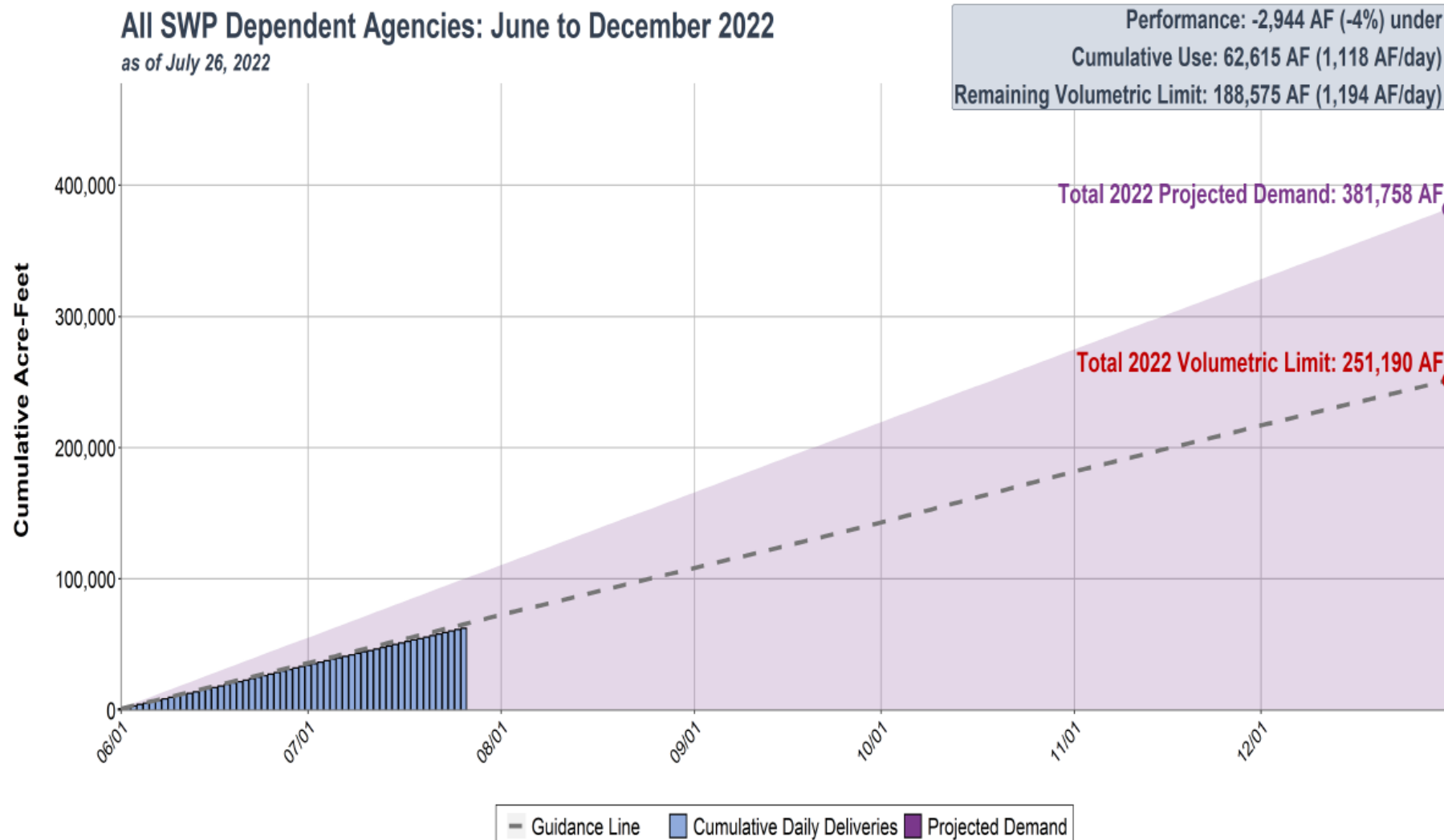


\*southeast Ventura County (15% Over Target) for July\*

# Emergency Water Conservation Tracking

All SWP Dependent Agencies: June to December 2022

as of July 26, 2022



**\*EWCP Period 4% Under Target for all SWP areas\***



## Water Supply Update & Drought Report

Last Revised: 07/20/2022

### PROGRESS ON REDUCING IMPORTED WATER USE

The Emergency Water Conservation Program (EWCP) period is: June 1, 2022 – December 31, 2022. Metropolitan Water District of Southern California (Metropolitan) established an agency-specific volumetric delivery limit for Calleguas. Calleguas subsequently calculated volumetric limits for its water purveyors. Volumetric limits are based on an equivalent share of Human Health and Safety (HH&S) water available from DWR (roughly based on 55 gallons per person per day offset by a certain volume of local supplies) plus any additional water Metropolitan can provide from the SWP system, allocated to each agency based on proportionate population. The following table exhibits monthly volumetric targets representing each agency's proportional share of the imported water available. If at a future date the individual agency, or Metropolitan as a whole, exercises the option to move to volumetric targets, the volumetric amounts would be the basis for how penalties would be assessed following Metropolitan's Emergency Water Conservation Handbook.

Purveyor	Population (CY 2022)	07/01/22 – 07/19/22 Period Target (AF)	07/01/22 – 07/19/22 Period Target (GPCD)	Period Ending 07/19/22 (AF)	Period Ending 07/19/22 (GPCD)	% Over / Under
Brandeis Mutual Water Company	600	3.8	108	2.7	78	-27%
Berylwood Heights Mutual Water Company	-	-	-	-	-	0%
Butler Ranch Mutual Water Company	-	-	-	-	-	0%
California Water Service	19,647	123.5	108	313.7	274	154%
California-American Water Company	63,898	401.8	108	701.2	188	75%
Camrosa Water District	32,945	189.4	99	235.9	123	25%
City of Camarillo	50,062	269.4	92	245.2	84	-9%
City of Oxnard	245,679	1,097.7	77	500.4	35	-54%
City of Simi Valley (VCWWD #8)	97,633	613.4	108	941.9	165	54%
City of Thousand Oaks	53,555	336.7	108	440.9	141	31%
Crestview Mutual Water Company	2,095	8.3	68	-	-	-100%
Golden State Water Company	45,287	284.6	108	227.8	86	-20%
Triunfo Water & Sanitation	14,002	88.0	108	84.4	103	-4%
Pleasant Valley Mutual Water Company	5,792	26.2	77	0.3	1	-99%
Solano Verde	100	0.6	108	18.9	3,254	2918%
Ventura County Water Works District #1	36,899	232.1	108	353.9	164	52%
Ventura County Water Works District #19	1,440	7.2	85	-	-	-100%

# Emergency Water Conservation Tracking

	Jul-22	7/1/22 - 7/26/22	7/1/22 - 7/26/22	7/26/2022	7/26/2022	7/26/2022
*WITH DEMAND SHAPING* Purveyor	Volumetric Limits - Period Monthly (AF)	Period Target (AF)	Target (GPCD)	Period Ending (AF)	Period Ending (GPCD)	Period Ending % Over/Under
California Water Service	201.6	169.0	108	424.6	271	151%
California-American Water Company	655.5	549.8	108	962.7	189	75%
Camrosa Water District	309.0	259.2	99	327.5	125	26%
City of Camarillo	439.5	368.6	92	345.3	86	-6%
City of Oxnard	1,790.9	1,502.1	77	668.8	34	-55%
City of Simi Valley (VCWWD #8)	1,000.8	839.4	108	1,277.8	164	52%
City of Thousand Oaks	549.4	460.8	108	593.6	139	29%
Golden State Water Company	464.3	389.4	108	309.2	86	-21%
Triunfo Water & Sanitation	143.6	120.5	108	115.4	103	-4%
Ventura County Water Works District #1	378.8	317.7	108	481.1	163	51%
<b>Total</b>	5,933	4,976		5,506		11%

# Additional HHS Supply for Wildfire Prevention



THE METROPOLITAN WATER DISTRICT  
OF SOUTHERN CALIFORNIA

Office of the General Manager

July 1, 2022

Ms. Karla Nemeth  
Director  
California Department of Water Resources  
P.O. Box 942836  
Sacramento, CA 94236-0001

Dear Ms. Nemeth:

Re: Request for additional Human Health and Safety Supply  
for Wildfire Prevention in Very High Fire Hazard Severity Zones

Dear Ms. Nemeth,

Metropolitan Water District of Southern California (Metropolitan) respectfully requests your approval of 26,300 acre-feet (AF) of supplemental water to help mitigate wildfire risks faced by Southern California communities during this extreme drought. This letter outlines the need for a limited exception to the human health and safety (HH&S) allotments described in the State Water Resources Control Board's (State Board) curtailment regulations.

## Background

Metropolitan appreciates the positive and collaborative approach taken by the California Department of Water Resources (DWR), the State Water Contractors, and Metropolitan's member agencies to respond during this extreme drought condition. Between the regional and local actions of Metropolitan and its member agencies, we expect demand for State Water Project (SWP) supplies to drop substantially through the end of the year.

Metropolitan took the following actions to reduce water demands within our service area as the drought intensified:

- **August 2021.** Issued a water supply alert to implement voluntary conservation measures<sup>1</sup>
- **November 2021.** Declared a Regional Drought Emergency and called on member agencies to reduce use of State Water Project supplies<sup>2</sup>

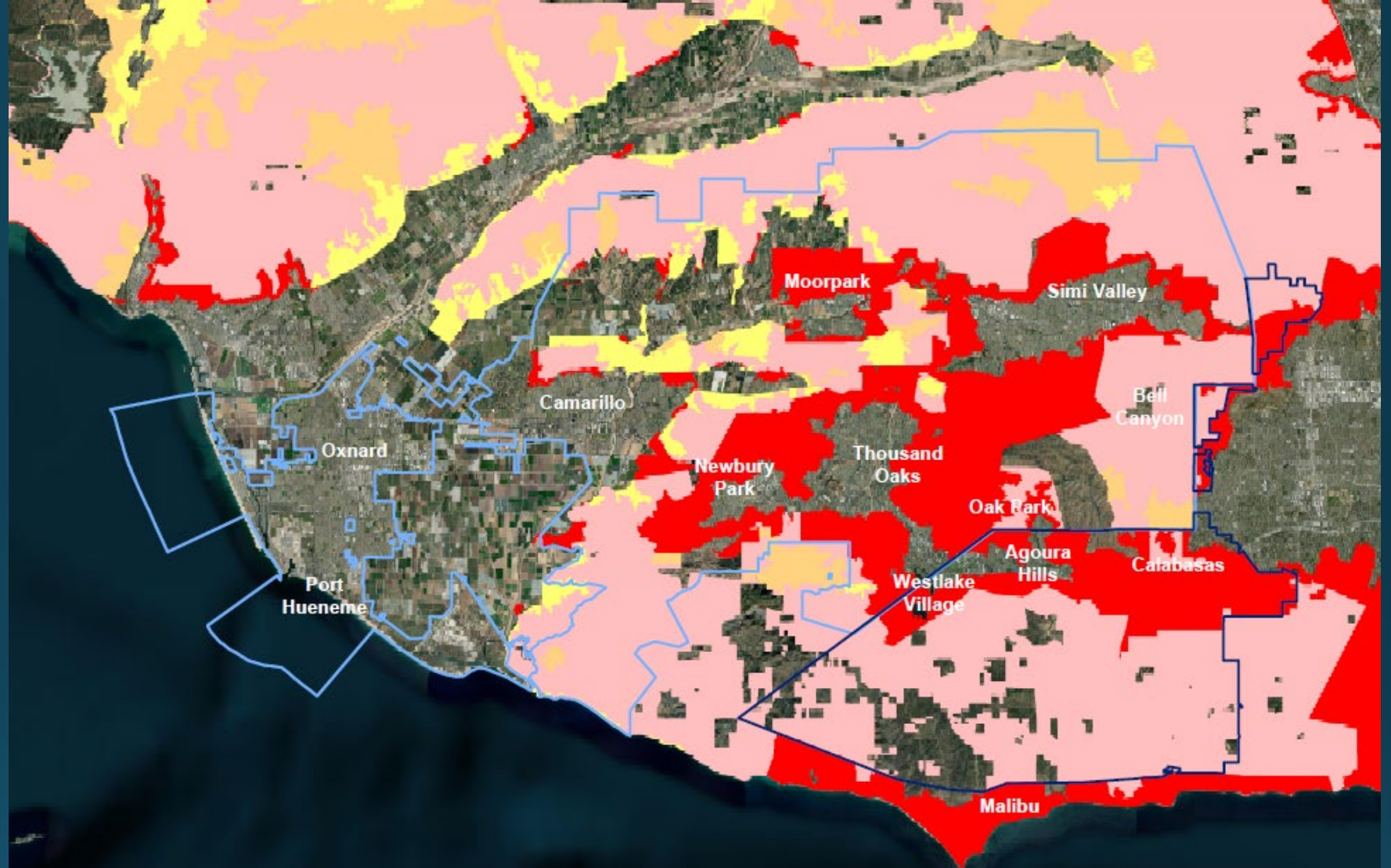
<sup>1</sup> MWDSC. (Aug. 17, 2021). [Adopt Resolution to Declare a "Condition 2 – Water Supply Alert"](#).

<sup>2</sup> MWDSC. (Nov. 9, 2021). [Adopt Resolution Declaring a Regional Drought Emergency, Calling on Member Agencies to Reduce Use of State Water Project Supplies, and Granting the General Manager Certain Additional Authorities](#).



**MWD requesting  
6,300 AF additional  
HHS supplies from  
DWR for Calleguas  
service area –  
specifically for fire  
prevention**

**For period: July –  
December 2022**



**Water District Service Areas**

— Calleguas MWD  
— Las Virgenes MWD

**CALIFORNIA FIRE HAZARD SEVERITY ZONES (JUNE 2022)**

— VHFHSZ  
— Very High  
— High  
— Moderate



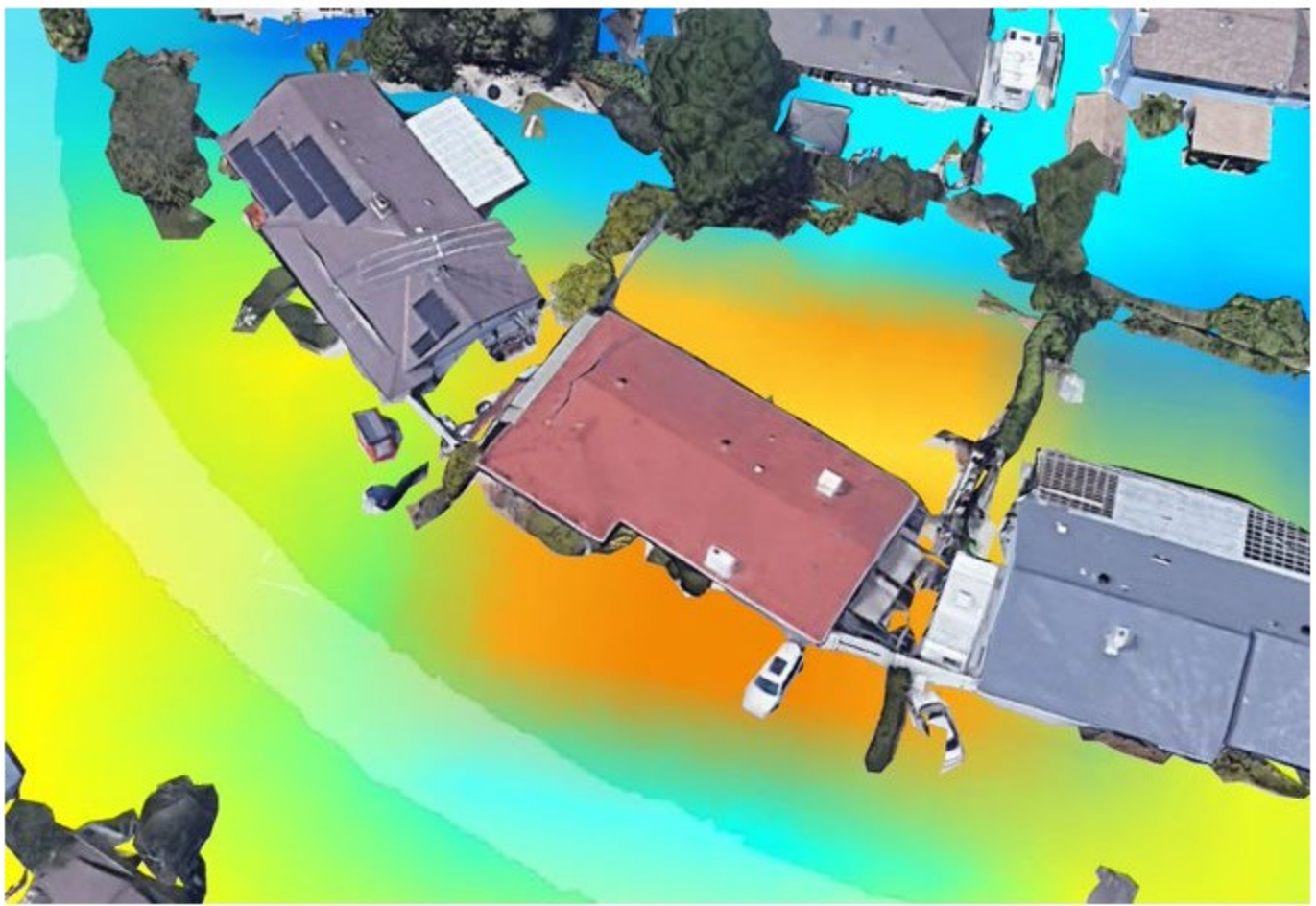
Dataset: Sentinel-2 L2A Show L1C

Date: 2022-07-25



- True color  
Based on bands 4,3,2
- False color  
Based on bands 8,4,3
- Highlight Optimized Natural Color  
Enhanced natural color visualization
- NDVI  
Based on combination of bands  $(B8 - B4) / (B8 + B4)$
- False color (urban)  
Based on bands 12,11,4
- Moisture index  
Based on combination of bands  $(B8A - B11) / (B8A + B11)$
- SWIR  
Based on bands 12,8A,4
- NDWI  
Based on combination of bands  $(B3 - B8) / (B3 + B8)$
- NDSI  
Based on combination of bands  $(B3 - B11) / (B3 + B11)$
- Scene classification map  
Classification of Sentinel2 data as result of ESA's Scene classification

Free sign up for all features



A household with dirt or fake lawn will appear orange or red on the satellite map. Photo courtesy of Ben Kuo.

